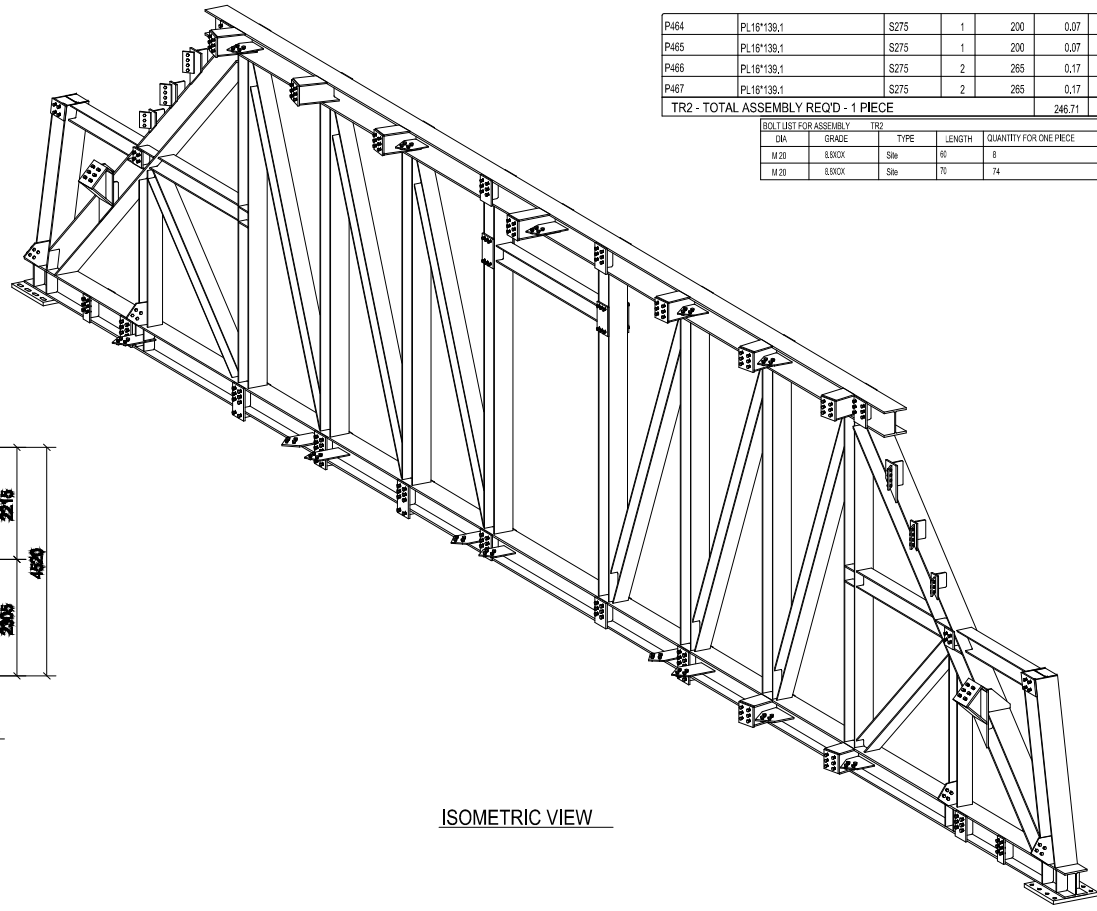


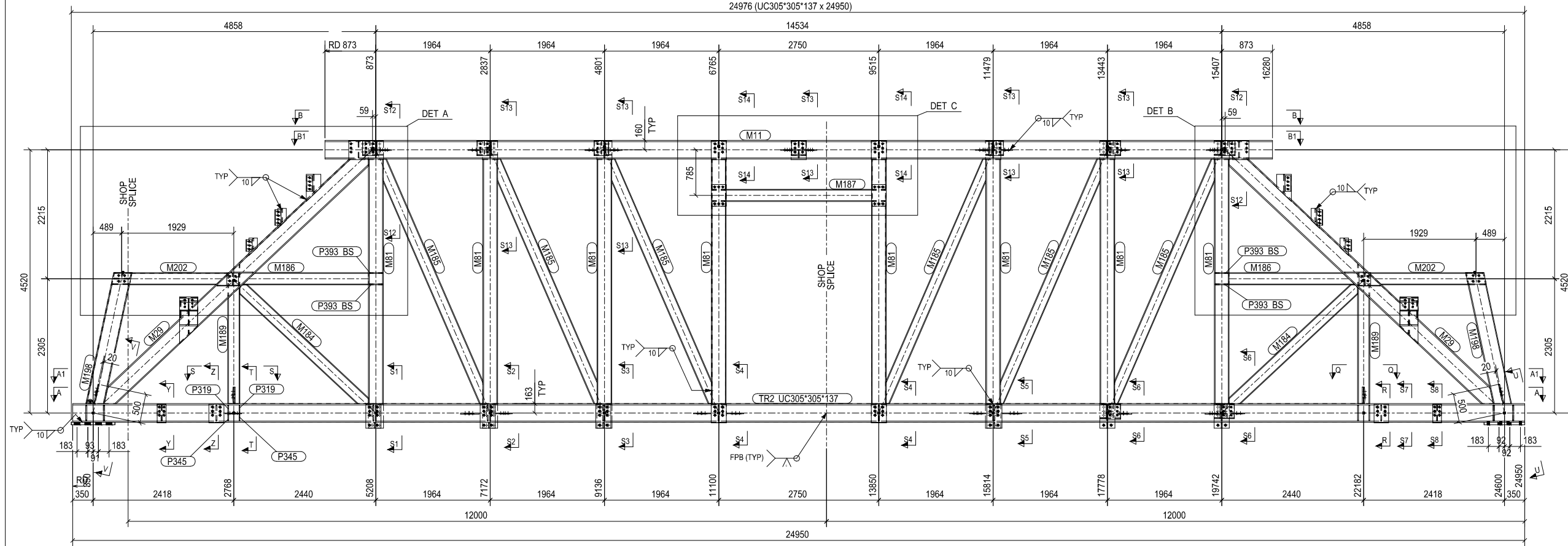
LINE DIAGRAM



ISOMETRIC VIEW

Mark	Profile	Grade	Qty.	Length (mm)	Area (m ²)	Weight (kg)
P464	PL16*136.1	S275	1	200	0.07	3.4952
P465	PL16*136.1	S275	1	200	0.07	3.4952
P466	PL16*136.1	S275	2	265	0.17	8.2624
P467	PL16*136.1	S275	2	265	0.17	8.2624
TR2 - TOTAL ASSEMBLY REQ'D - 1 PIECE				246.71	15097.51	

Mark	Profile	Grade	Qty.	Length (mm)	Area (m ²)	Weight (kg)
M10	UC305*305*137	S275	1	24950	46.20	3411.237
M11	UC305*305*137	S275	1	16280	30.16	2225.807
M29	UC305*305*118	S275	2	6162	21.70	1448.131
M79	UC254*254*99	S275	1	500	0.66	44.5963
M61	UC254*254*73	S275	8	4200	50.86	2450.566
M184	UC203*203*60	S275	2	2966	6.98	354.1851
M185	UC203*203*60	S275	6	4521	30.98	1618.793
M186	UC203*203*60	S275	2	2165	5.06	258.4012
M187	UC203*203*60	S275	1	2496	3.07	148.9449
M189	UC203*203*60	S275	2	2000	4.89	238.6795
M198	UC305*305*97	S275	2	2365	8.41	457.7784
M202	UC203*203*60	S275	2	1706	3.88	203.9550
M218	UC254*254*73	S275	1	500	0.65	36.5048
M221	UC254*254*73	S275	1	500	0.65	36.5048
M223	UC254*254*73	S275	1	500	0.65	36.4613
M224	UC254*254*73	S275	1	486	0.65	35.4702
M225	UC254*254*73	S275	1	486	0.65	35.4698
M226	UC254*254*73	S275	1	500	0.65	36.4613
M227	UC254*254*73	S275	1	573	0.80	41.7720
M302	UC254*254*89	S275	1	451	0.58	40.1906
M332	UC305*305*118	S275	2	378	0.91	68.7355
P3	PL16*147.7	S275	5	277	0.47	25.5613
P8	PL16*147.7	S275	4	387	0.52	28.6106
P9	PL16*147.7	S275	8	366	0.99	54.0388
P14	PL20*200	S275	1	208	0.10	6.5378
P25	PL16*147.7	S275	6	279	0.57	30.8941
P38	PL16*147.7	S275	9	277	0.85	46.0103
P50	PL12*287.6	S275	1	487	0.26	11.2829
P53	PL12*274.8	S275	1	522	0.27	11.8877
P54	PL16*322	S275	1	526	0.31	18.0323
P77	PL20*250	S275	7	252	1.02	69.2845
P78	PL16*147.7	S275	2	277	0.19	10.2245
P83	PL20*280	S275	2	323	0.41	26.3342
P89	PL12*280.5	S275	1	418	0.21	9.1980
P90	PL12*382.9	S275	1	387	0.23	10.0594
P91	PL12*326	S275	1	511	0.30	13.1541
P92	PL12*280.5	S275	1	500	0.26	11.4464
P114	PL16*123	S275	8	226	0.52	27.4422
P116	PL20*250	S275	1	258	0.15	10.1383
P117	PL20*242.3	S275	1	250	0.14	9.5103
P119	PL20*310	S275	2	314	0.44	30.6134
P120	PL20*310	S275	2	734	0.81	57.1985
P122	PL20*200	S275	2	357	0.29	19.7663
P123	PL20*145	S275	2	299	0.17	10.5183
P127	PL20*260	S275	11	323	2.10	144.8089
P138	PL45*920	S275	1	700	0.99	153.3118
P141	PL45*920	S275	1	750	1.05	164.2628
P183	PL20*254.1	S275	4	370	0.85	58.9788
P210	PL20*150	S275	2	277	0.20	12.9808
P216	PL20*200	S275	1	224	0.11	7.0402
P219	PL20*150	S275	6	277	0.60	38.9423
P220	PL20*280	S275	5	412	1.21	84.0892
P221	PL20*280	S275	1	323	0.19	13.1645
P232	PL16*410.7	S275	1	451	0.28	16.2325
P234	PL16*323.6	S275	1	405	0.23	13.0199
P240	PL16*99.5	S275	4	309	0.30	15.3434
P251	PL12*281.3	S275	1	506	0.26	11.5958
P255	PL16*147.7	S275	2	277	0.19	10.2245
P274	PL20*145	S275	2	344	0.20	12.6526
P285	PL16*285.7	S275	2	322	0.32	18.0673
P286	PL16*338.5	S275	2	386	0.44	25.3112
P297	PL20*280	S275	1	412	0.24	16.8178
P300	PL20*250	S275	1	323	0.18	12.6581
P304	PL20*150	S275	1	323	0.12	7.5949
P315	PL20*150	S275	3	323	0.35	22.7846
P319	PL16*140.5	S275	2	148	0.10	5.1545
P324	PL20*260	S275	4	412	0.96	67.2714
P345	PL16*122.6	S275	2	148	0.09	4.4941
P360	PL16*99.5	S275	1	155	0.03	1.3741
P361	PL16*99.5	S275	1	150	0.03	1.3344
P368	PL16*147.7	S275	2	277	0.19	10.2245
P372	PL16*147.7	S275	6	277	0.57	30.6735
P393	PL16*123	S275	8	226	0.53	27.6883
P394	PL16*147.7	S275	4	277	0.38	20.4490
P399	PL20*280	S275	4	323	0.76	52.6578
P408	PL16*147.7	S275	5	277	0.47	25.5613
P429	PL12*302.2	S275	2	391	0.40	17.5819
P431	PL12*367.7	S275	2	388	0.44	19.4775
P434	PL12*326.7	S275	2	341	0.36	15.5908
P435	PL12*313.4	S275	2	355	0.37	16.0202
P438	PL12*305.5	S275	2	472	0.52	22.8462
P446	PL20*250	S275	2	486	0.40	27.4803
P448	PL16*287	S275	1	307	0.13	7.2493
P449	PL16*287	S275	1	307	0.13	7.2352
P457	PL16*147.7	S275	2	208	0.14	7.6120
P459	PL16*145.7	S275	2	307	0.21	11.1804
P461	PL16*145.7	S275	2	232	0.16	8.4582
P462	PL16*145.7	S275	2	188	0.13	6.8213



TRUSS ALL DIAGONALS & VERTICALS SHALL BE PARTIAL PENETRATION WELD (WHERE FILLETTE IS NOT POSSIBLE)

1 Nos. TRUSS Marked TR2

FOR SECTION & DET. REF.SHT.NO:- TR-2 2 OF 6 ~ 4 OF 6
FOR PART DWG. REF.SHT.NO:- TR-2 4 OF 6 ~ 6 OF 6

NOTES
1. ALL MARKS TO BE PREFIXED WITH PMPW-
2. ALL MATERIAL GRADES AS NOTED.
3. Ⓢ : DENOTES PART TOP POSITION FOR HARD PUNCH.
4. ALL LP & LA ARE NOT TO BE WELDED AND SHALL BE WIRE TIED UP WITH THE MAIN PART SHOWN.

Rev	Description	DATE	DRAWN	CHKD.
1	REVISED AS MARKED	24-09-12	SCAD	SCAD
0	ISSUED FOR CONSTRUCTION	22-09-12	SCAD	SCAD

Main Contractor
CONSOLIDATED CONTRACTING ENGINEERING & PROCUREMENT S.A.L. - OFFSHORE

Subcontractor:
RASANA ENGINEERING IND. CO. LTD.
TEL: 6-5360890 FAX: 06-5360891
P.O. Box 992, Sharjah, UAE.

SUB CONSULTANT
dha design
Studio 4, Cole Street Studios
6-8 Cole Street
London SE1 4YH
Tel: +44 (0)20 7939 0920
Fax: +44 (0)20 7939 0921

SUB CONSULTANT
MCTS
MICHAEL CHARNEY TECHNICAL SERVICES
PO Box 57245, Dubai, UAE
Tel: +971 4 3298232
Fax: +971 4 3298232
Email: info@mctsservices.com

SUB CONSULTANT
Haj Gulf Quantity Surveying
P.O. Box 113467, Abu Dhabi, UAE
Tel: +971 2 499 7800 Fax: +971 2 459 7801
Website: www.hajgulf.com

LEAD CONSULTANT
إيوان EWAN
ABU DHABI | UNITED ARAB EMIRATES
TEL: +971 2 844 6000 | FAX: +971 2 644 8880
GULF HOUSE ENGINEERING & CONSULTANTS
P.O. Box 113467, Abu Dhabi, UAE
Tel: +971 2 499 7800 Fax: +971 2 459 7801
Website: www.ewan.com

SUB CONSULTANT
WSP
MIDDLE EAST | P.O. Box 112046, Abu Dhabi, U.A.E.
Tel: +971 (0) 2 667 3875 Fax: +971 (0) 2 663 3676
Info: www.wspgroup.com

PROJECT MANAGER
ARMSTRONG
R.W. ARMSTRONG & ASSOCIATES
P.O. Box 46148, Abu Dhabi, UAE
Tel: +971 2 612 7777 Fax: +971 2 612 7700 Website: www.rwa.com

CLIENT
اللجنة التنفيذية لمتابعة مشروع قصر الرئاسة
The Executive Committee For The Presidential Palace Project

PROJECT:
PRESIDENTIAL PALACE ABU DHABI, UAE

PRESIDENTIAL WING (PMPW)
DET. OF TRUSS TR-2 SHT. 1 OF 6

DRG No.: **ST-PMPW-SS- TR2 1/6**

SCALE: 1:5 PROJECT No.: **CCP-220** Rev: 1